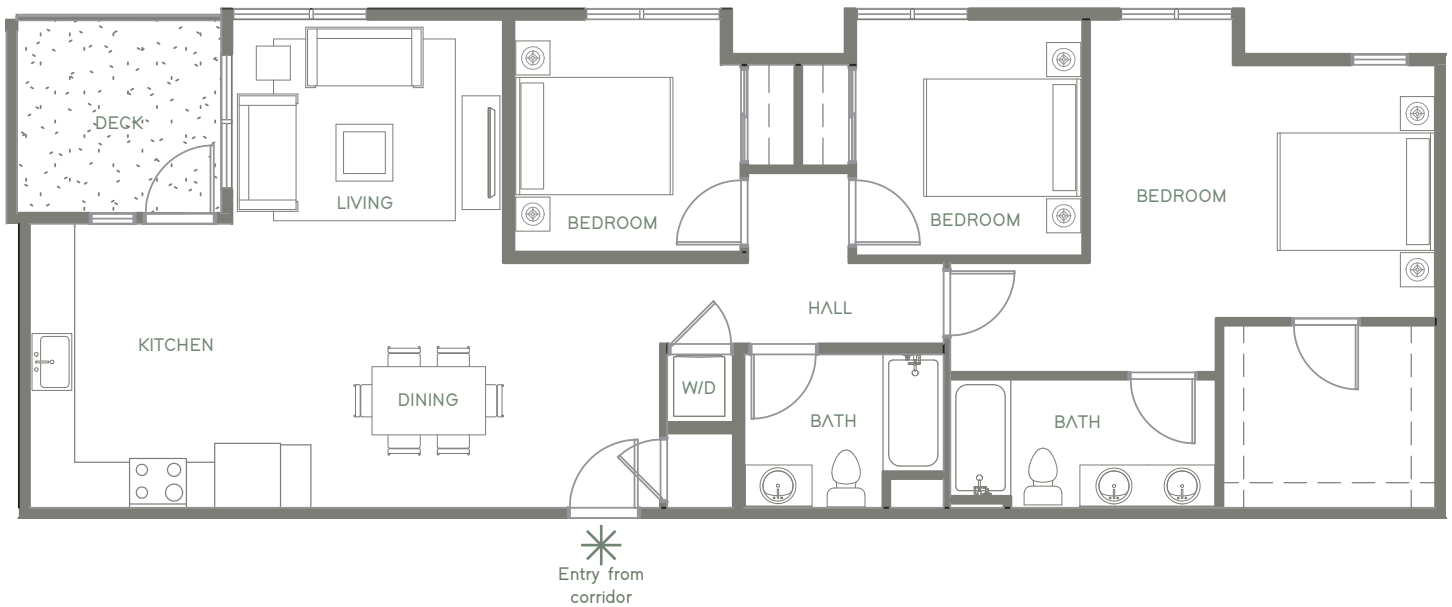


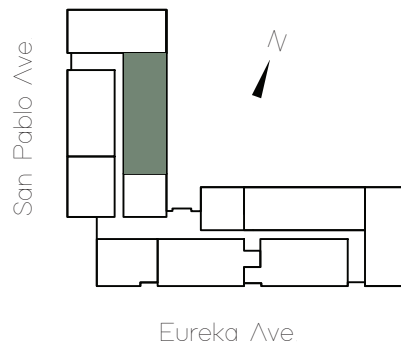
CREDENCE

LIVEATCREDECE.COM

UNIT 302 - 3 Bedroom | 2 Bath ~ 1,301 Square Feet



THIRD FLOOR



liveatcredence.com | 10300 San Pablo Avenue, El Cerrito, CA 94530

2020 Credence. These marketing materials are for informational purposes only. Credence reserves the right to change floor plans, elevations, specifications, materials, colors, features or sales prices without prior notice. Such changes may not always be reflected in our model homes. All renderings, floor plans and handouts are artist's conceptions and are not intended to be an actual depiction of the buildings, walks, driveways or landscaping. Prices, terms and features are subject to change without notice. Square footage or floor areas shown in any marketing or other materials is approximate and may be more or less than the actual size. Real estate consulting, sales and marketing by MB Realty a licensed California broker, CA DRE 01863697. Equal Housing Opportunity

